

p

PROJECT BOOK  
CERAMIC AND PORCELAIN TILES

aparici



## RESIDENTIAL

2

PRIVATE HOUSES | RESIDENTIAL DEVELOPMENTS



## HO.RE.CA

36

HOSPITALITY | RESTAURANTS | CATERING FIELDS



## RETAIL & SERVICES

106

SHOPPING CENTERS | SHOPS

OFFICES | PUBLIC BUILDINGS



## CONTRACT DIVISION

142

# RES ID NTIAL AL

aparici



# HERZFELDHAUS

VIENNA | AUSTRIA

Collection > Kilim  
Architect > HMA Architects



# RESIDENTIAL DEVELOPMENT

MOSCOW | RUSSIA

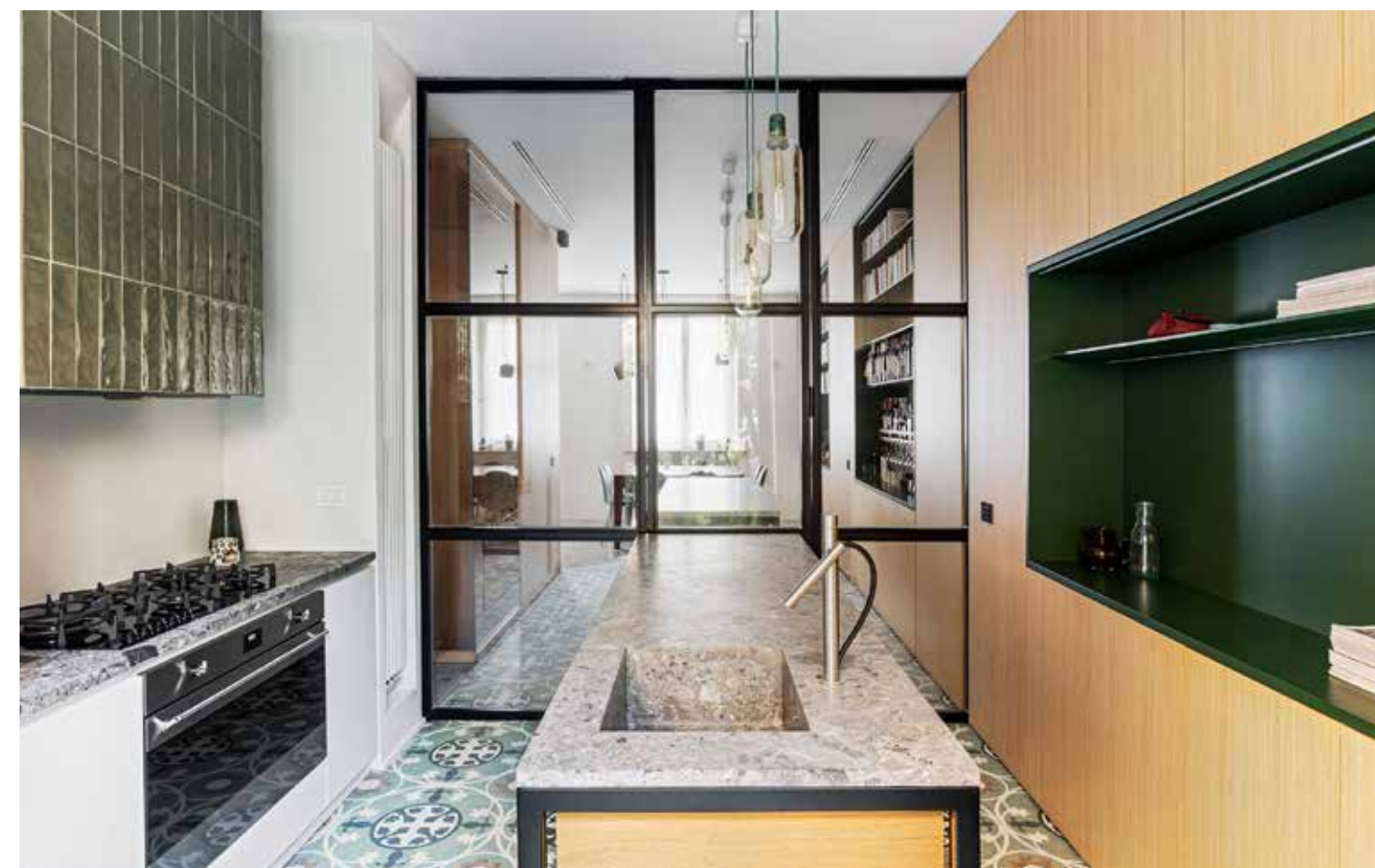
Collection > Carpet & Aged  
Interior Designer > Sergey Ryndenkin | Yoroomdesign



# TP3 - PRIVATE HOUSE

MILAN | ITALY

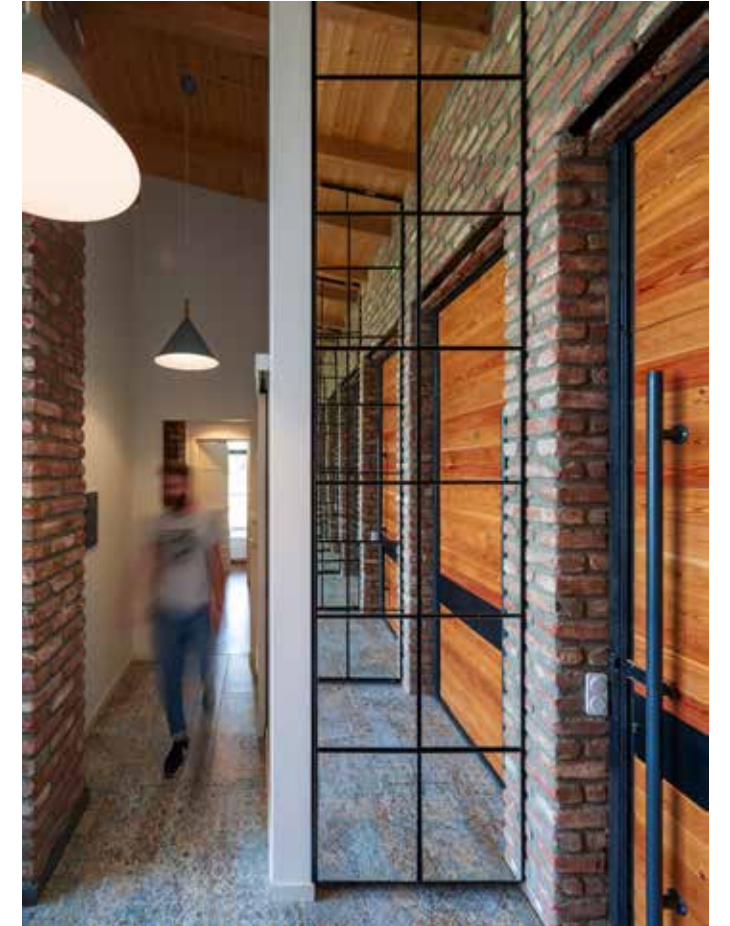
Collection > Venezia  
Architect & Designer > Atelier Zero



# HOUSE IN ARTANA

ARTANA | GEORGIA

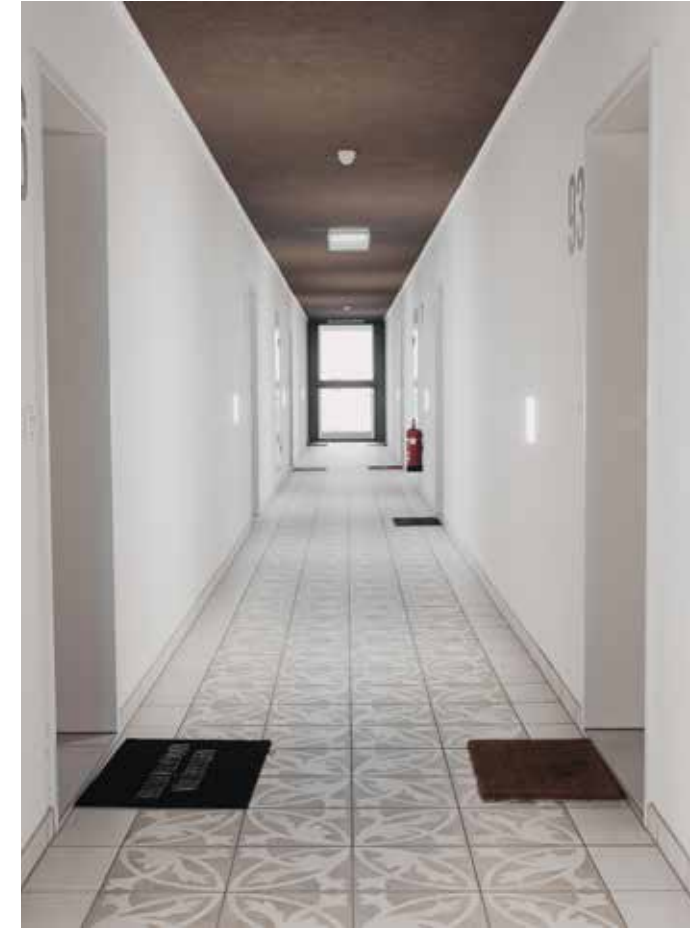
Collection > Carpet  
Architect & Designers > Nino Tchanturia & Luka Chaganava  
NS Studio



# SEE SEE LIVING APARTMENT BUILDING

VIENNA | AUSTRIA

Collection > Retro  
Architect & Designer > Hillinger & Mayrhofer





# GAS HOUSE

TOLEDO | SPAIN

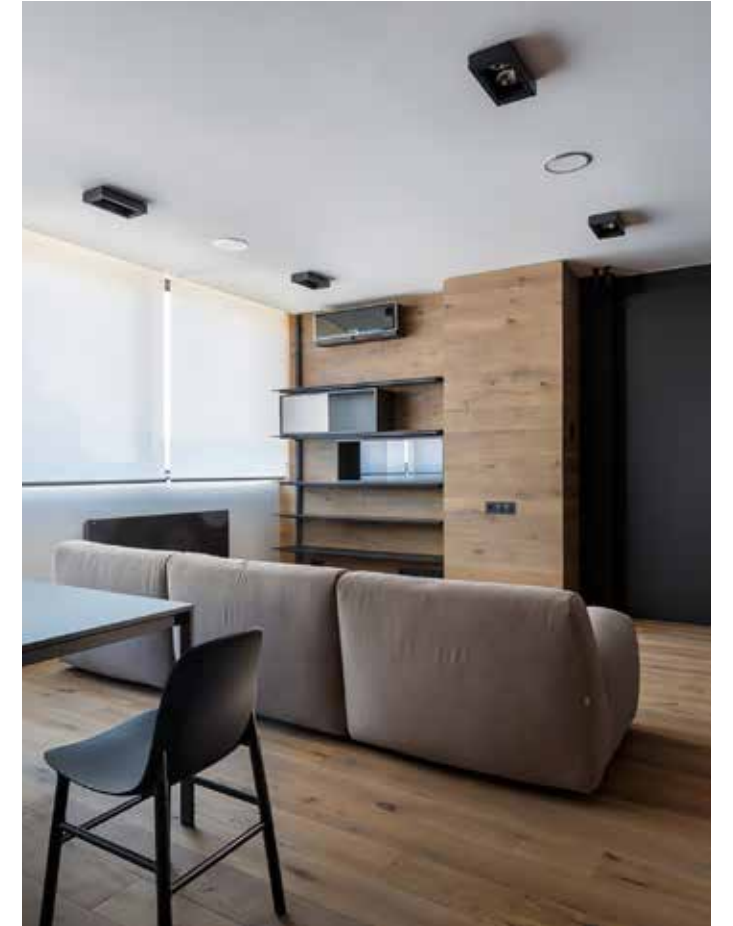
Collection > Carpet, Markham & Mixing  
Interior Designer > OOIO Arquitectura



# APARTMENT DT1H1

KIEV | UKRAINE

Collection > Vanguard  
Architect > Sirotov Architects



# PRIVATE HOUSE

ONTARIO | CANADA

Collection > Moving  
Architect > Hudson Architecture  
Interior Designer > Stacklab



# ALTHAN PARK

VIENNA | AUSTRIA

Collection > Build  
Architect > 6b47 Real Estate



# BAUFELD D23 RESIDENTIAL DEVELOPMENT

VIENNA | AUSTRIA

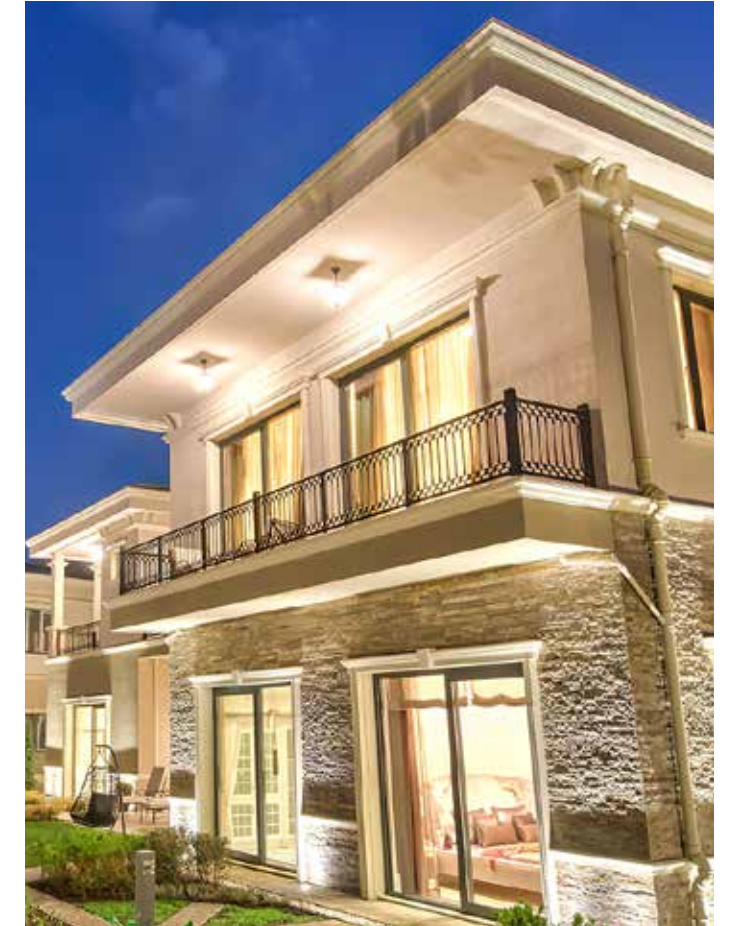
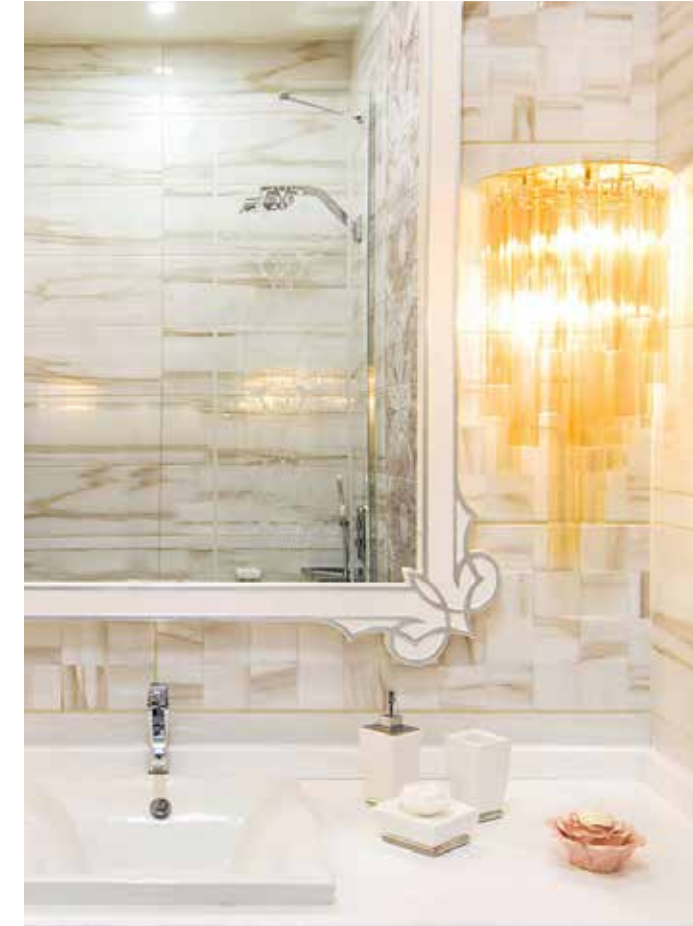
Collection > Moving  
Architect > Clemens Kirsch Architects



# DREAMLAND GOLF VILLAS & RESIDENCES

BAKU | AZERBAIJAN

Collection > Moving, Neutral Trend, Giselle & Femme



# PRIVATE HOUSE

FRANCE

Collection > Bondi & Tango



# OTTERLY FARMHOUSE

UNITED KINGDOM

Collection > Vanguard



# PRIVATE HOUSE

CANADA

Collection > Xplode, Neutral, Range, Vanguard, Collage & Metro



# PRIVATE HOUSE

KALININSKY | RUSSIA

Collection > Delice  
Interior Designer > Natalia Vasiljeva





# SREBRZYNSKA PARK APARTMENT

LODZ | POLAND

Collection > Kilim  
Interior Designer > Oso Design



# SALISBURY STUDENTS HOUSE

MANCHESTER | UNITED KINGDOM

Collection > Dixon  
Architect > Beech Design



# PRIVATE HOUSE

RUSSIA

Collection > Savage



# CASA MIGA

MADRID | SPAIN

Collection > Monaco & Markhem  
Interior Designer > OOIIO Arquitectura



# RESIDENTIAL TOWERS

PANAMA | PANAMA

Collection > Neutral, Tribal & Imarble



# PRIVATE HOUSE

LONDON | UNITED KINGDOM

Collection > Allegro, Aura & Skin  
Interior Designer > G & T London



# HO RE CA.

aparici



GF VICTORIA  
HOTEL \*\*\*\*\*GL

TENERIFE | SPAIN

Collection > Retro & Autumn  
Architect & Designer > Mayte Calzadilla  
A+I empresa del Grupo Fedola 2014-2017



RADISSON BLU BÉKE  
HOTEL \*\*\*\*

BUDAPEST | HUNGARY

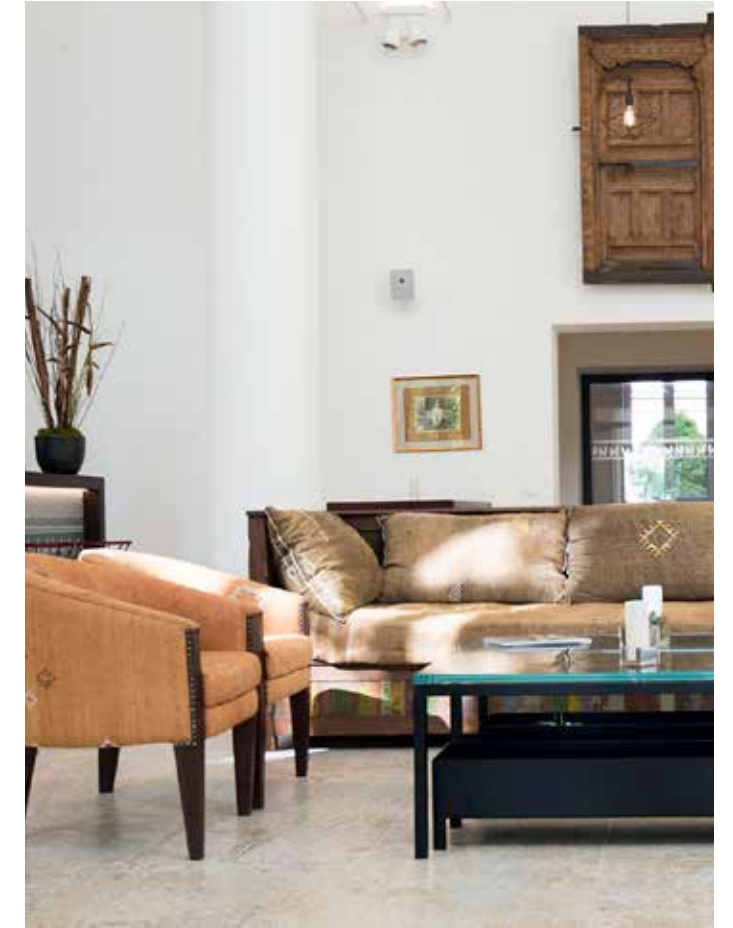
Collection > Imarble



# GABRIUM HOTEL \*\*\*

MARIA ENZERSDORF | AUSTRIA

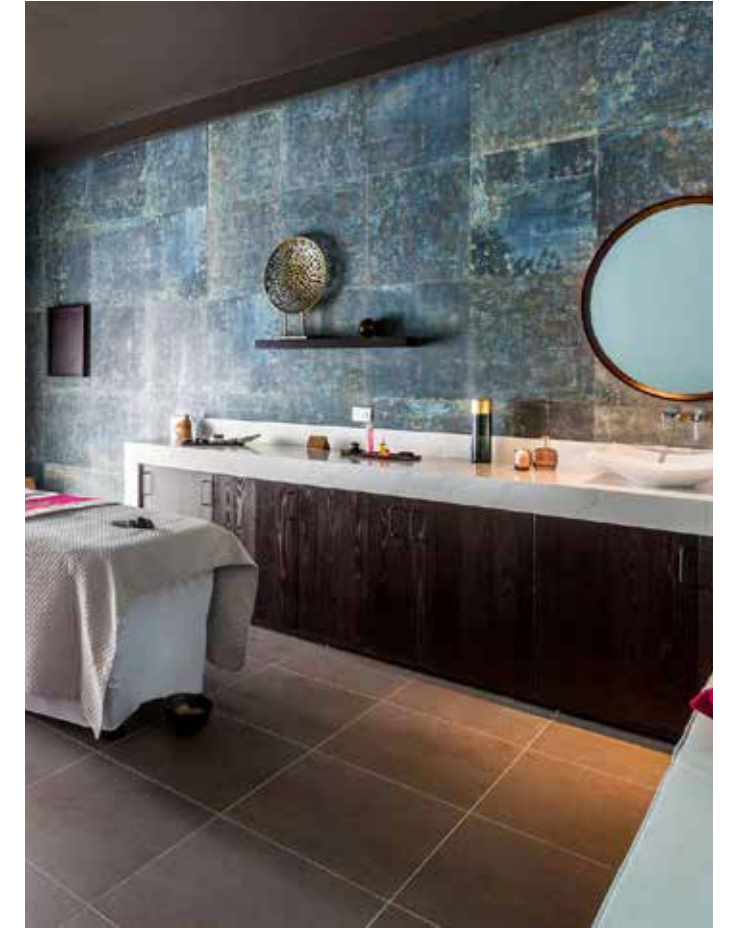
Collection > Carpet  
Design & Architecture > Isa Stein Studio



# CLUB MED EXCLUSIVE COLLECTION MICHES PLAYA ESMERALDA

MICHES | DOMINICAN REPUBLIC

Collection > Grunge | Tango | Tex | Neila | Cotto | Primary |  
Custom Outdoor Tiles  
Interior Designer > FIG London





# SOL BY MELIA

TAGHAZOUT | MOROCCO

Collection > Rafter, Vanguard, Moving & Retro  
Architect > Alvaro Sans (ASAH)  
Interior Designer > Proffetional Finishing Design



# CELEBRITY EDGE

CRUISE

Collection > Vanguard



# GREENHOUSE

SALENTO | ITALY

Collection > Bondi & Chalkwood  
Architect > Marco Giovinazzo



NEYA PORTO  
HOTEL \*\*\*\*

PORTO | PORTUGAL

Collection > Sylan



# KETTENBRÜCKE HOTEL \*\*\*\*

AURAU | SWITZERLAND

Collection > Vanguard & Retro  
Interior Designer > Atelier West Architekten



RADISSON BLU  
HOTEL \*\*\*\*\*

LARNACA | CYPRUS

Collection > Carpet



ONE & ONLY  
ROYAL MIRAGE  
HOTEL \*\*\*\*\*

DUBAI | UNITED ARAB EMIRATES

Collection > Retro  
Designer > WA International



DON GREGORY BY  
DUNAS HOTEL \*\*\*\*\*

GRAN CANARIA | SPAIN

Collection > Polar  
Architect > Gpy Arquitectos



# QUITE SIMPLY FRENCH BOUTIQUE HOTEL

LANCASTER | UNITED KINGDOM

Collection > Grunge & Carpet



# PALACIO TORRE DE RUESGA HOTEL & SPA \*\*\*\*

CANTABRIA | SPAIN

Collection > Carpet





# H10 ATLANTIC SUNSET HOTEL \*\*\*\*\*

TENERIFE | SPAIN

Collection > Brave & Markham  
Interior Designer > Marengo espacios y reformas



# ALOFT HOTEL \*\*\*\*

RIYAD & DHAHRAN | SAUDI ARABIA

Collection > Logic & Thor  
Architect > Eccho Architecture



# VOYAGE TORBA HOTEL

TORBA | TURKEY

Collection > Ronda



# AYLA OASIS - CLOUD7

AQABA | JORDANIA

Collection > Moving Wall & Vanguard



# CAP NEGRET \*\*\*\*

ALTEA | SPAIN

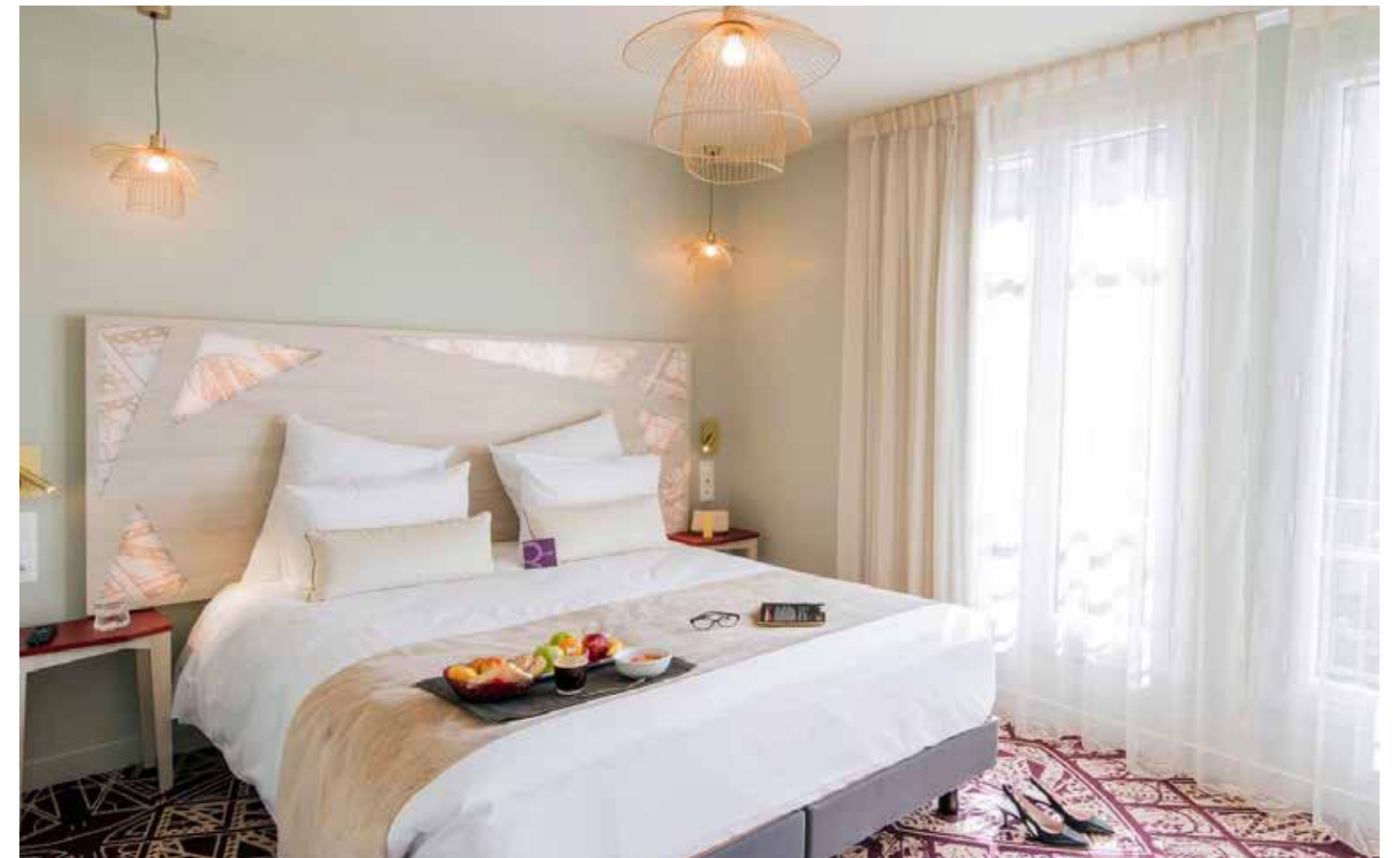
Collection > Carpet & Mixing  
Architect > JPO Arquitectura



# MERCURE PARIS PONT DE LEVALLOIS NEUILLY \*\*\*\*

LEVALLOIS | FRANCE

Collection > Zenith



# BAYA HOTEL & SPA \*\*\*

CAPBRETON | FRANCE

Collection > Carpet



# MITIS NORIDA BEACH HOTEL

KOS | GREECE

Collection > Custom Product  
Interior Designer > WATG



# ARLETTE RESTAURANT

LVIV | UKRAINE

Collection > Chalkwood & Crayon  
Architect > Baranburo  
Designer > Artem Zubkevich



# BOCA BOCA RESTAURANT

SALOU | SPAIN

Collection > Carpet & Aged  
Architect > Roger Blasco  
Interior Designer > Xavier Vendrell  
Graphic Design > Indaleci Salas



# SIGNOR SMITH TRATTORIA

HELSINKI | FINLAND

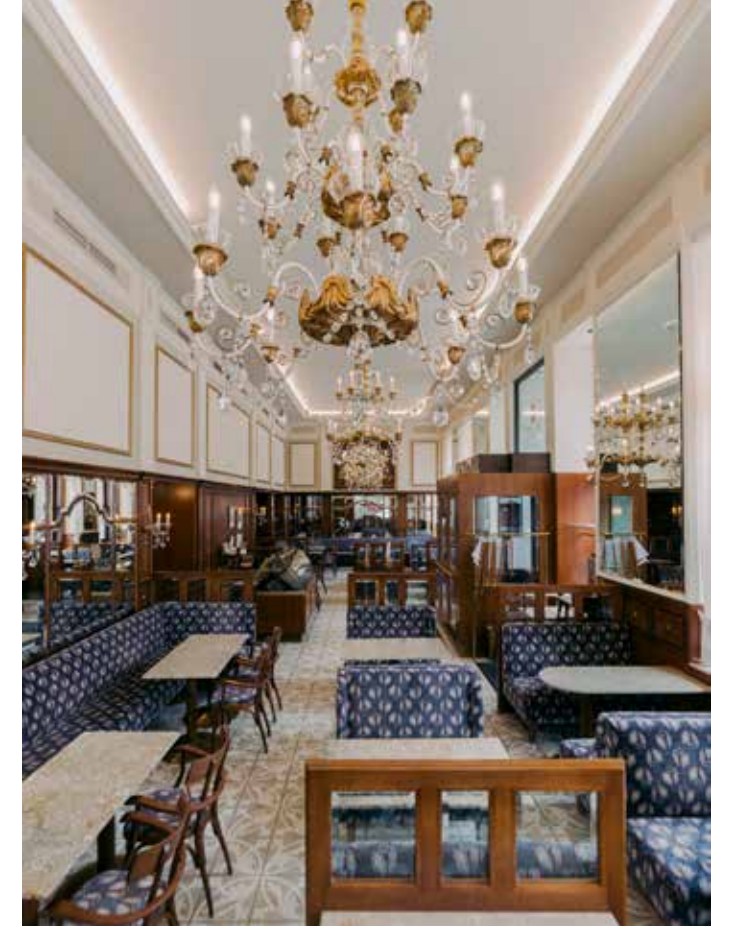
Collection > Venezia



# CAFÉ MOZART

VIENNA | AUSTRIA

Collection > Retro  
Architect > Hoche Popovic





# CAFÉ IBERICO

VALLADOLID | SPAIN

Collection > Sao Luis  
Interior Designer > Blackinteriorismo



# BEER GARDEN BAR

KEFAR SHMARYAHU | ISRAEL

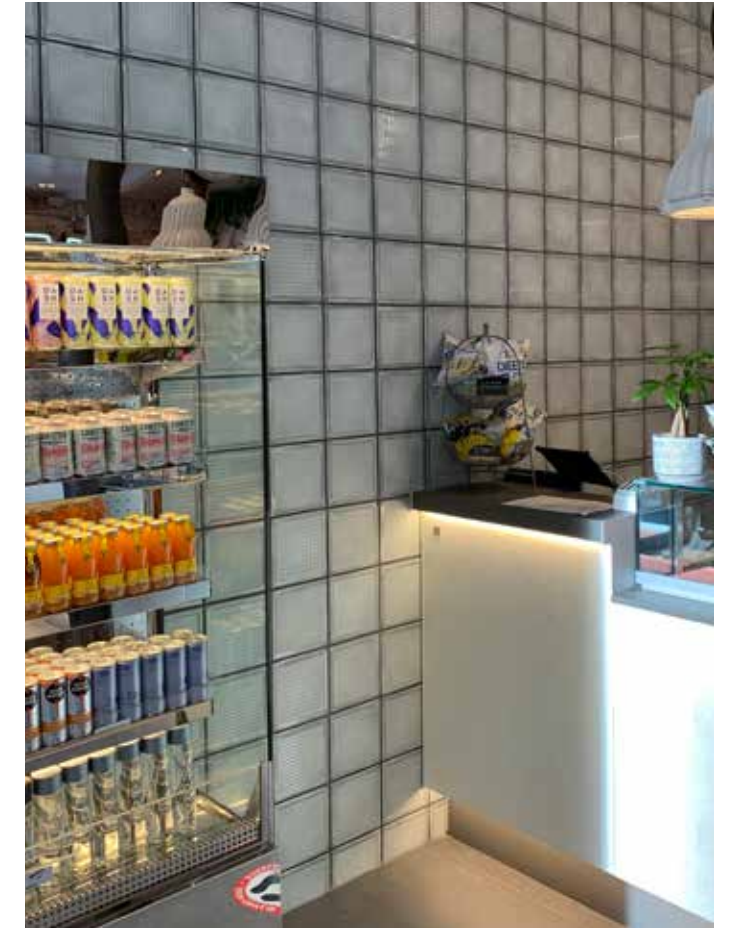
Collection > Aged  
Architect > Or Kochav - Orko Studio



# CANTEEN 58

GLASGOW | UNITED KINGDOM

Collection > Glass  
Interior Designer > CM Interior Designs



# FAFA'S RESTAURANT

HELSINKI | FINLAND

Collection > Vanguard  
Interior Designer > Recompass



# QUINDICI RESTAURANT

ALTEA | SPAIN

Collection > Carpet & Trend  
Architect & Interior Designer > Julio Guixeres



# KENTIA GOURMET CLUB RESTAURANT

LANZAROTE | SPAIN

Collection > Bella Bianco, Vanguard & Neutral  
Interior Designer > Pablo Ramos Baldi



# PARTICOLARE MILANO

MILAN | ITALY

Collection > Carpet



# SAUL E. MÉNDEZ RESTAURANT

GUATEMALA | GUATEMALA

Collection > Moving  
Architect > Taller Ken



# CASA AMIGOS

MALAGA | SPAIN

Collection > Cabana  
Interior Designer > Paco Lago Interioriza



# BAR PATRÓN

SYDNEY | AUSTRALIA

Collection > Carpet



# AWANI RESTAURANT

DUBAI | ARAB EMIRATES

Collection > Carpet & Vanguard  
Interior Designer > AWJ Investments LLC



# EL LAUREL RESTAURANT

GRANADA | SPAIN

Collection > Carpet  
Architect > Cristina Lloret





# NANETI PIZZERIA

BUCHAREST | ROMANIA

Collection > Carpet



# LA CHANCLA CAFÉ

MÁLAGA | SPAIN

Collection > Moving  
Interior Designer > Paco Lago Interioriza



# BRUTTO RESTAURANT

CIUDAD DE PANAMA | PANAMA

Collection > Nordic  
Architect > Totón Sánchez | Sánchez & Sánchez



# TXOKO RESTAURANT

LA MORALEJA | SPAIN

Collection > Terre  
Architect > AKSL Architect



# CLANDESTINO RESTAURANT

MADRID | SPAIN

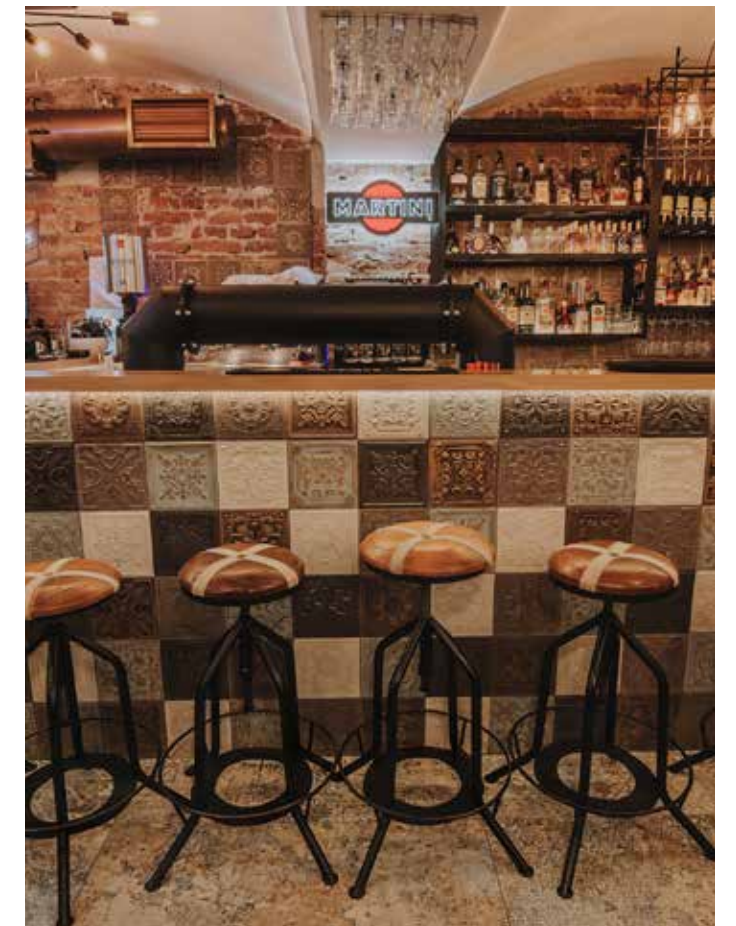
Collection > Trend & Bondi  
Interior Designer > Blackinteriorismo



# RUBICON PUB

OSIJEK | CROATIA

Collection > Carpet & Gatsby



# COKOLADNI ATELJE DOBNIK COFFEE

LIUBLJAN | SLOVENIA

Collection > Aged  
Architect > AKSL Arhitekti



# MANGATA BAR

VALLADOLID | SPAIN

Collection > Venezia  
Interior Designer > Blackinteriorismo



# MELISSA'S KITCHEN

LUCERNE | SWITZERLAND

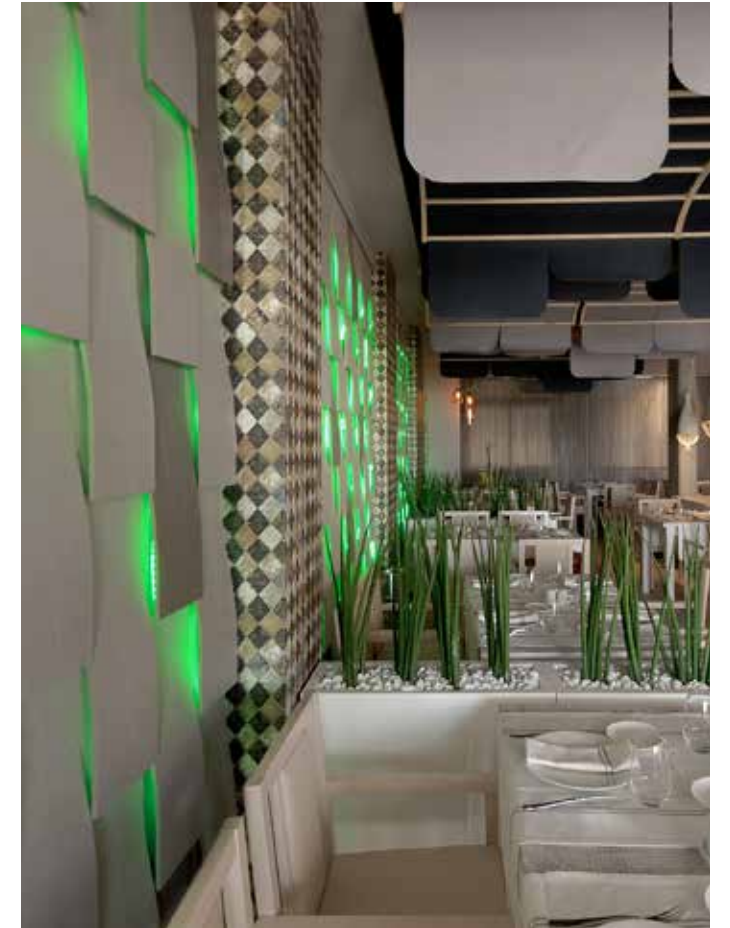
Collection > Bondi



# PUNTO DE SAL

BENIDORM | SPAIN

Collection > Remind & Legend  
Architect > Julio Guixeres



# LA BARRA RESTAURANT

SALAMANCA | SPAIN

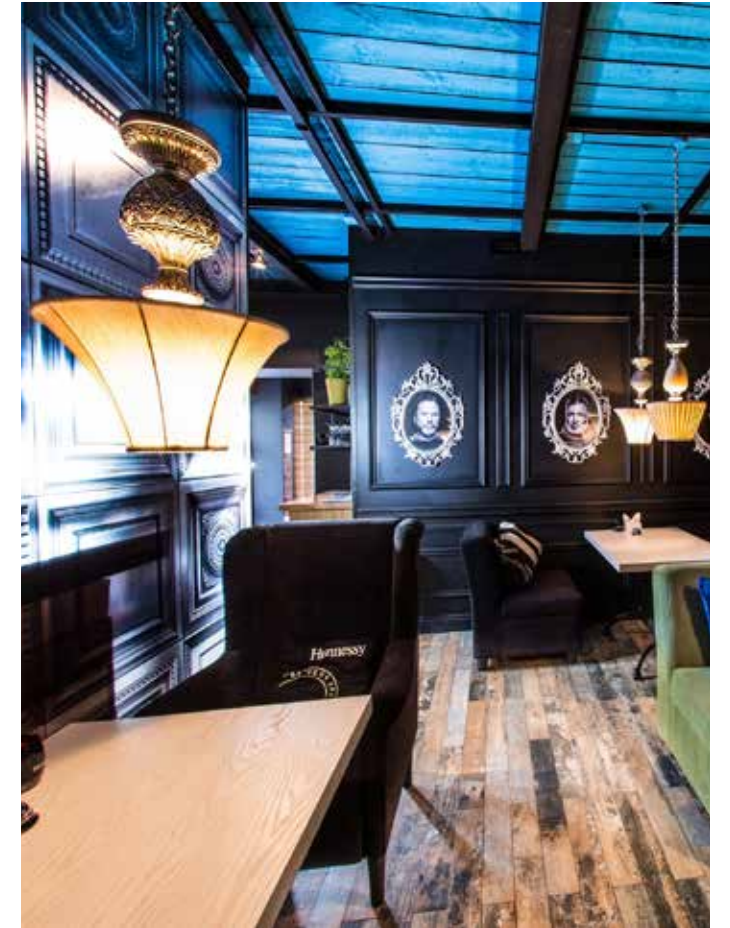
Collection > Cool & Apuane



# MILES RESTAURANT

VOLGOGRAD | RUSSIA

Collection > Sonar



# RETAIL & SERVICES

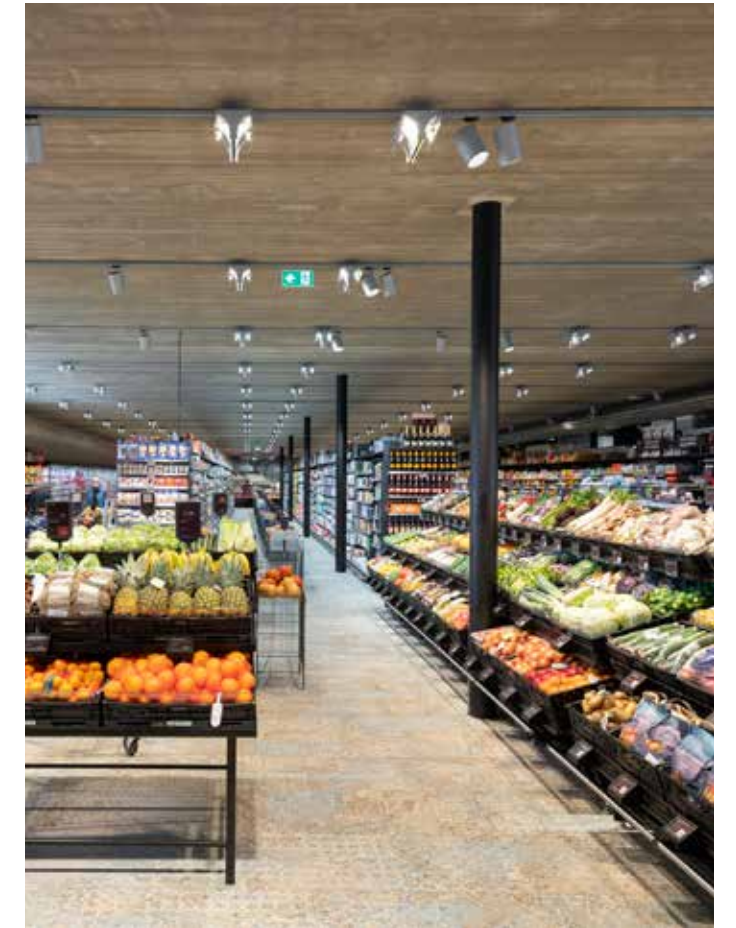
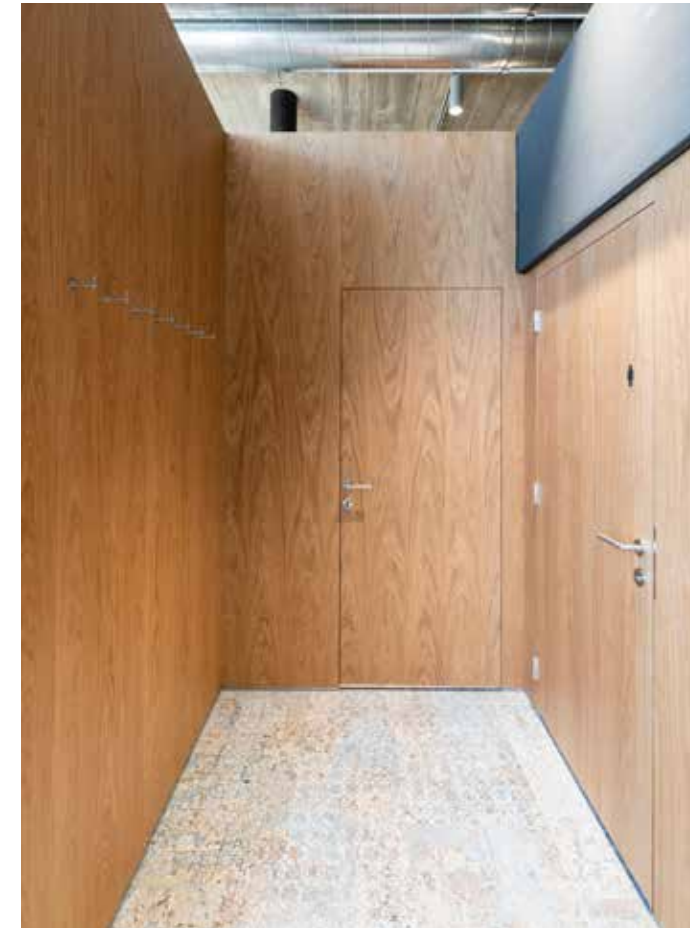
aparici



# MPREIS SUPERMARKT

HOHENEMS | AUSTRIA

Collection > Carpet  
Photographer > Lukas Schaller  
Architect > Nägele Waibel ZT





# OFFICE BUILDING 1905

VALENCIA | SPAIN

Collection > Avenue  
Architect > Francisco Silvestre  
\*Fuente: ArchDaily



# HOLMES PLACE

VIENNA | AUSTRIA

Collection > Carpet & Cabana  
Architect > Baumann & Partner



# ATG ZUPAN

KRMELJ | SLOVENIA

Collection > Baffin  
Architect & Interior Designer >  
Studio ZIP - Davor Podbregar  
Photography > Lovro Rozina



# MILANEO SHOPPING CENTER

STUTTGART | GERMANY

Collection > G-Stone & Blade  
Architect > RKW Rhode Kellermann  
Wawrowski Architektur + Städtebau in  
cooperation with ECE Architects



# OAKES FARMS MARKET

NAPLES | UNITED STATES

Collection > Vanguard, Sonar & Neila  
Architect > Grupo Arquimágenes



# CAVA NEKTAR

ATHENS | GREECE

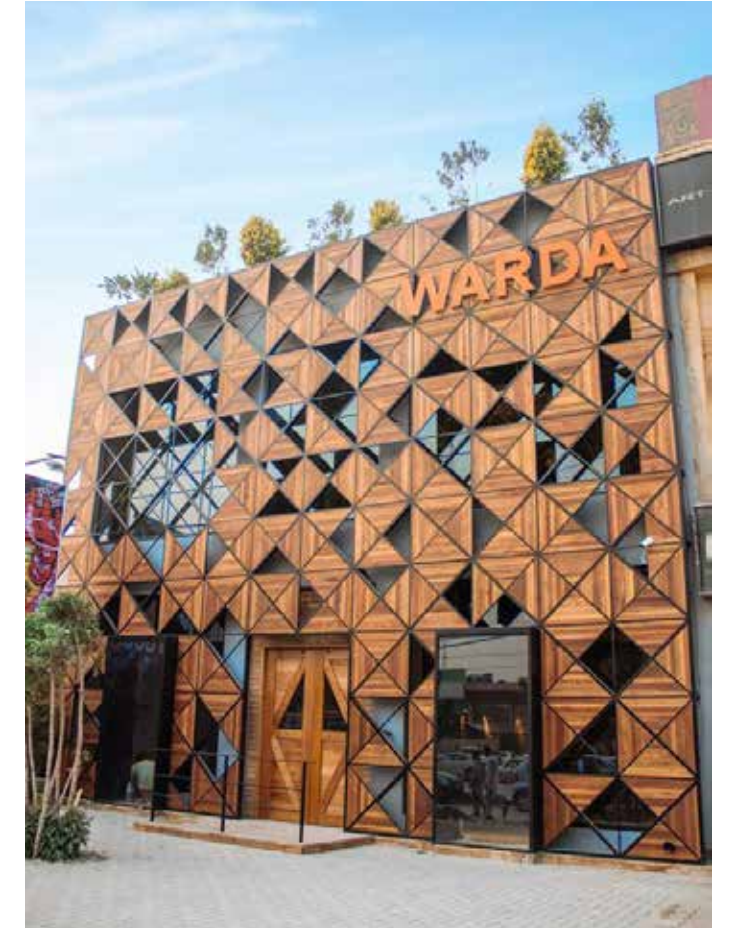
Collection > Luxor, Regio & Equos  
Architect & Designer > Costas Gagos



# WARDA STORE

PESHAWAR | PAKISTAN

Collection > Terre  
Architect > Metropolitan Studio of Architecture



# HITZ BAKERY

LANDQUART | SWITZERLAND

Collection > Retro  
Design > Robert Wettemann

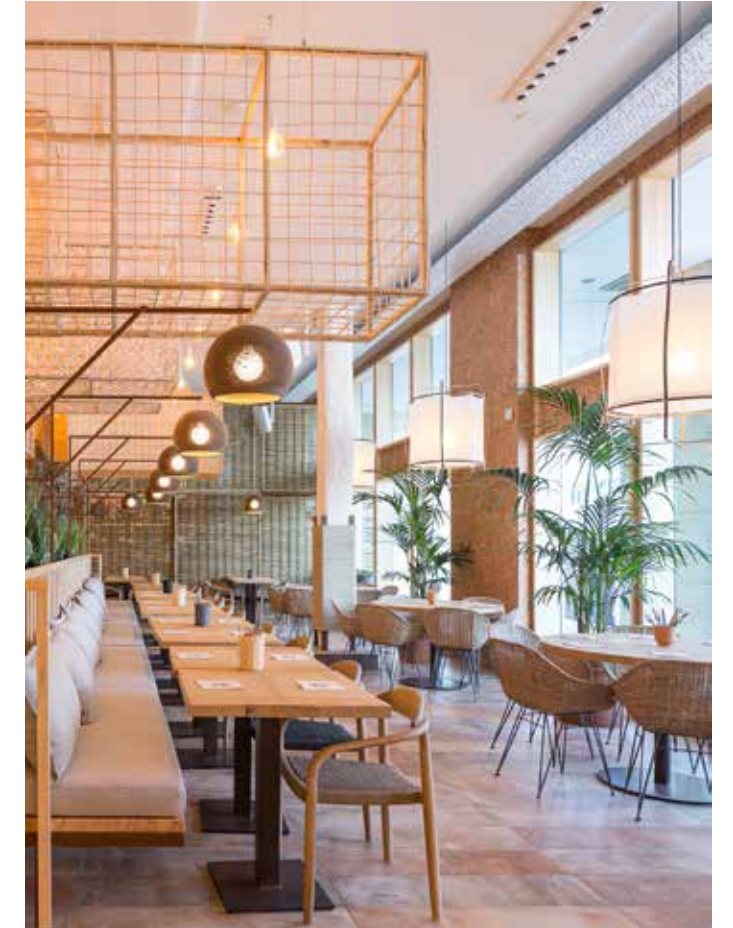




# AMETLLER ORIGEN COMMONS

BARCELONA | SPAIN

Collection > Terre  
Interior Designer > Neus Mateu (Estudi Girbau Mateu)



# OISOI ORIENTAL FOOD

SHEFFIELD | UNITED KINGDOM

Collection > Moving  
Architect > Schweitzer



# RIEDO BEAUTY CENTER

NORMANDY | FRANCE

Collection > Build

# STUDIO INSIGN

BUCHAREST | ROMANIA

Collection > Vanguard & Couvet  
Interior Designer > Studio Insign



# MEDIESTETIC CLINIC

SOCHI | RUSSIA

Collection > Bella Bianco



# DENTELIA CLINIC

SAINT OUEN | FRANCE

Collection > Saw



# BODEGA BEGONIA RUEDA

VALLADOLID | SPAIN

Collection > Build



# KEURHORST BAKERY

APELDOORN | NETHERLANDS

Collection > Kilim



# BODEGA LINAJE DEL PAGO

EL SAUZAL | SPAIN

Collection > Stracciatella  
Architect > Julieta Esteban Rosell



# PHARMACY

MARIBOR | SLOVENIA

Collection > Stracciatella  
Architect > Plan B Architects



# MERCADO RIO ORO

SAN JOSÉ | COSTA RICA

Collection > Terre, Moving & Lumber  
Architect > Grupo Arquimágenes



# PANZERHALLE MARKTHALLE

SALZBURG | AUSTRIA

Collection > Bondi, Moving & Retro  
Architect > Smartvoll





# APARICI CONTRACT DIVISION

The service-oriented Aparici Contract Division manages the most articulate and complex tile orders, ranging from design to logistics, and from supply to installation. The Aparici Contract Division offers valuable systems engineering and technical drawing support to designers and architects, and all round support to investors with the highest quality standards in residential, hospitality, corporate and retail sectors.

The activities of design, production, project management and logistics are fully integrated to enable the execution of articulated contract projects of any style and dimension, in compliance with the constant pursuit of technical and design excellence. Many projects have made their mark in the history of Aparici among which one can find hotel complexes, shopping centers, airports or residential developments.

Ceramic and porcelain tiles, designed, engineered and manufactured for a specific project.

The Aparici Contract Division interprets and translates every specific aesthetic and functional specification by analysing the design concept and quality standards required by the customer. The Aparici Contract Division provides its customers with tips, solutions and ideas that are functional, cost-effective and respond to the customer's time constraints.

Liaising with the customer and architects, combined with the research, testing, and engineering of each element involved in the project, are key aspects of the approach adopted by the Aparici Contract Division for the execution of "turnkey" projects. This means considering each project as unique, while ensuring the added value of a cutting-edge industrial company, the use of advanced technology, strict quality controls, and optimised logistics.

Aparici Contract Division se presenta como un departamento "de servicios",



capaz de gestionar los pedidos de cerámica más complejos, desde la planificación del proyecto a la logística, así como el suministro y la instalación. Aparici Contract Division ofrece a los interioristas y arquitectos el valioso apoyo para la ingeniería e implementación de los dibujos técnicos, y a los inversores un apoyo a 360° con los estándares de calidad más elevados en los diversos ámbitos de: residencial, hospitality, corporativo y retail.

Las actividades de planificación, producción, gestión de proyectos y logística se integran perfectamente para garantizar la realización de proyectos contract de cualquier dimensión de acuerdo con la búsqueda constante de excelencia técnica y de diseño. Importantes proyectos han caracterizado la historia de Aparici entre los que se encuentran complejos hoteleros, centros comerciales, aeropuertos o desarrollos residenciales.

Cerámica y porcelánico, creados, diseñados y realizados para un proyecto específico.

Analizando el diseño conceptual y los estándares de calidad requeridos por el cliente, Aparici Contract Division es capaz de interpretar y traducir cualquier necesidad estética y funcional de proyecto. Aparici brinda a sus clientes sugerencias, soluciones, ideas que respetan al mismo tiempo funcionalidad, vínculos de coste y plazos de ejecución.

El diálogo con el cliente y los arquitectos, la investigación y experimentación, la ingeniería de cada elemento son los puntos clave del enfoque de Aparici Contract Division para la realización de cada proyecto "llave en mano". Ello significa considerar cada proyecto como único, y garantizar al mismo tiempo el valor añadido de una realidad industrial de vanguardia, el uso de tecnologías avanzadas, rigurosos controles de calidad y la optimización de los aspectos logísticos.

## Know-how & dedicated contract services

Wide experience, talent and skills to meet the specific needs of contract projects of any dimension.

The will to approach the market, not just as a tile supplier, but mainly as a supplier of know-how and services. A large industrial group, a trademark of quality and prestige, a unique Research & Development Centre, three manufacturing facilities, and certified quality systems are the pillars on which the Aparici Contract Division has built its approach and its credibility in the contract sector.

## Sales and Marketing

Aparici Contract Division is a qualified solution to the market's growing demand for a concept that seeks to express uniqueness, distinction and character. It is a world in which the expectations of the designer are always very high: in order to supply suitable solutions, it is necessary to listen to and get a feeling for the client's needs, identifying languages and procedures that fulfill this important task each and every time. Aparici Contract Division makes the accredited experience of its professionals available in order to achieve this goal.

## Operations and Production

Involved and active at all stages of the project, these departments develop the project, devising the products by making detailed construction drawings and building prototypes, often completing mock-ups. All of this allows the design quality to be controlled; to discover any problems in its construction; to add improvements; to discuss with client and designer, even once the works are underway, so as to share decisions and solutions that are "made to measure" in every sense.

## Logistics

Logistics according to Aparici's Contract Division is a package of services that organises, coordinates and supplies products and materials adhering to the terms of the contract. The nerve centre of this activity is the warehouse in which the finished products are managed according to the requirements and phases of each project together with our wide international distribution network.

## Quality and Environmental Certification

The Aparici Contract Division complies strictly with the provisions of the UNE EN ISO 9001:2008 and UNE EN ISO 14001:2008 regarding quality and environmental management standards. These certifications require the adoption of accurate control systems during every process, from design to production, installation and through to customer service always taking into account and prioritizing our interest and care for our environment.

## Know How & Servicio dedicado al Contract

Una multitud de experiencias, talentos y habilidades para responder a las necesidades específicas de los proyectos contract de cualquier dimensión.

La voluntad para hacer frente al mercado no solamente como proveedor de cerámica, sino principalmente como proveedor de know-how y de servicios. Un importante grupo industrial, una marca de calidad y prestigio, un centro de investigación y desarrollo único en el sector, tres plantas de producción y sistemas de calidad certificados son los pilares sobre los cuales ha construido este enfoque y su credibilidad en el sector contract.

## Ventas y Marketing

Aparici Contract Division es una respuesta cualificada y acreditada a la creciente demanda del mercado de proyectos capaces de expresar un carácter único y distintivo. Se trata de un sector en el cual las expectativas del diseñador son un gran desafío: para proponer soluciones adecuadas, es necesario escuchar, o tal vez entrar en sintonía con la sensibilidad del cliente, hallando lenguajes y medios cada vez diferentes. Aparici Contract Division se centra en la experiencia de sus acreditados profesionales para lograr este objetivo.

## Operaciones y Producción

Involucrados y activos en todas las fases del proyecto, estos departamentos implementan el proyecto realizando los dibujos técnicos, desarrollando prototipos y, a menudo, los mock-up completos. Todo ello permite controlar la calidad del diseño; desarrollar mejoras; razonar con el cliente y el diseñador, incluso cuando los trabajos están en curso, para compartir las decisiones y hallar soluciones que sean siempre "a medida".

## Logística

La logística según Aparici Contract Division es un paquete completo de servicios que incluye la organización, la coordinación y la entrega de los productos y materiales que forman parte del contrato. El centro neurálgico de esta actividad es el almacén en el cual se gestionan los productos terminados según las necesidades y las fases de cada proyecto junto con nuestra amplia red de distribución a nivel internacional.

## Certificaciones de Calidad y Medioambiente

Aparici Contract Division se adhiere estrictamente a las certificaciones UNE EN ISO 9001:2008 y UNE EN ISO 14001:2008 para la gestión de la calidad y de sistemas de gestión ambiental. Estos certificados demuestran la adopción de severos sistemas de control en cada fase, desde el diseño hasta la producción, pasando por la instalación y la atención al cliente siempre teniendo en cuenta y priorizando nuestro interés por el cuidado del medio ambiente.



PREMIUM CERAMIC & PORCELAIN  
MADE IN SPAIN - SINCE 1961

## SYMBOLS / SÍMBOLOS / СИМВОЛЫ

### OTHER PRODUCTS / OTROS PRODUCTOS / ДРУГИЕ МАТЕРИАЛЫ



### COMPLEMENTS / COMPLEMENTOS / АКЦЕССУАРЫ



### FINISHES / ACABADOS / ПОВЕРХНОСТЬ



aparici

Carretera Castellón - Alcora km.12 - 12110 Alcora (Castellón - Spain)  
T. +34 964 701 010 E: [ceramicas@aparici.com](mailto:ceramicas@aparici.com) W. [www.aparici.com](http://www.aparici.com)